



WINEGARD®

Installation Guide for DPH42 Switch with Winegard® TRAV'LER® SK-1000 Satellite TV Antenna



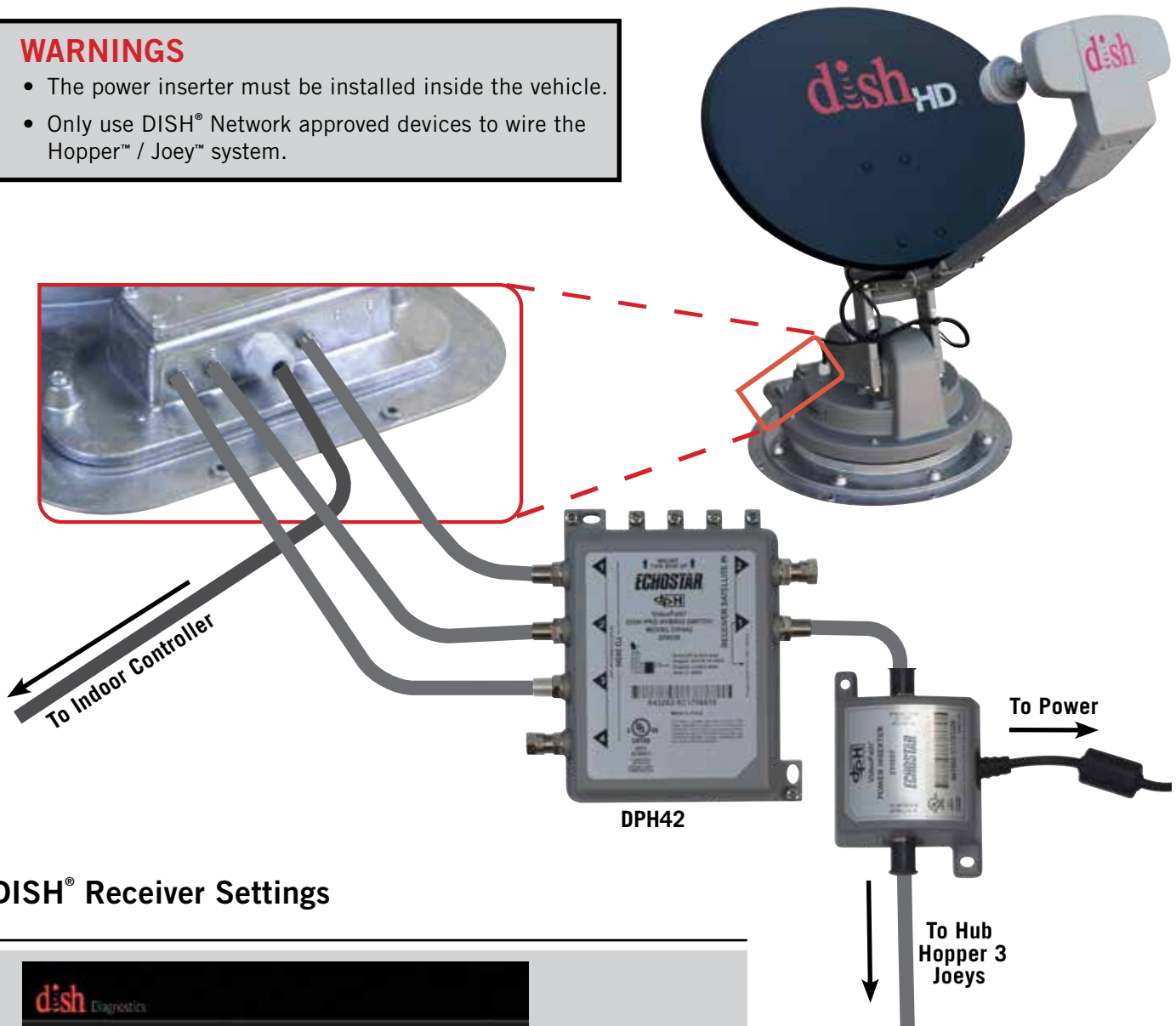
For up-to-date product and warranty information,
visit winegard.com/skdph42

www.winegard.com/mobile
For help, email help@winegard.com or call 1-800-788-4417

DPH42 Switch with Winegard® TRAV'LER® SK-1000 Satellite TV Antenna

WARNINGS

- The power inserter must be installed inside the vehicle.
- Only use DISH® Network approved devices to wire the Hopper™ / Joey™ system.



DISH® Receiver Settings



After installation and TRAV'LER acquires the signal, open "Settings". Run "Test Installation".

Disclaimer: although every effort has been made to ensure that the information in this manual is correct and complete, no company shall be held liable for any errors or omissions in this manual. Changes and technological advances are continuously being made in the satellite antenna market. Information provided in this manual was accurate at time of printing.

DISH, Hopper & Joey are registered trademarks of DISH Network L.L.C. Winegard & TRAV'LER are trademarks of Winegard Company.

Winegard Company • 3000 Kirkwood St. • Burlington, IA 52601-2000 • 800/788-4417 • FAX 319/754-0787
www.winegard.com • Printed in U.S.A. • ©2018 Winegard Company Rev1 6/20 2452420